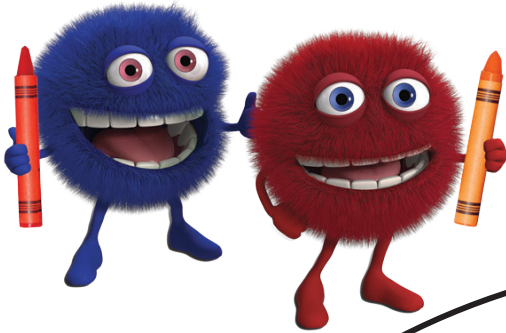
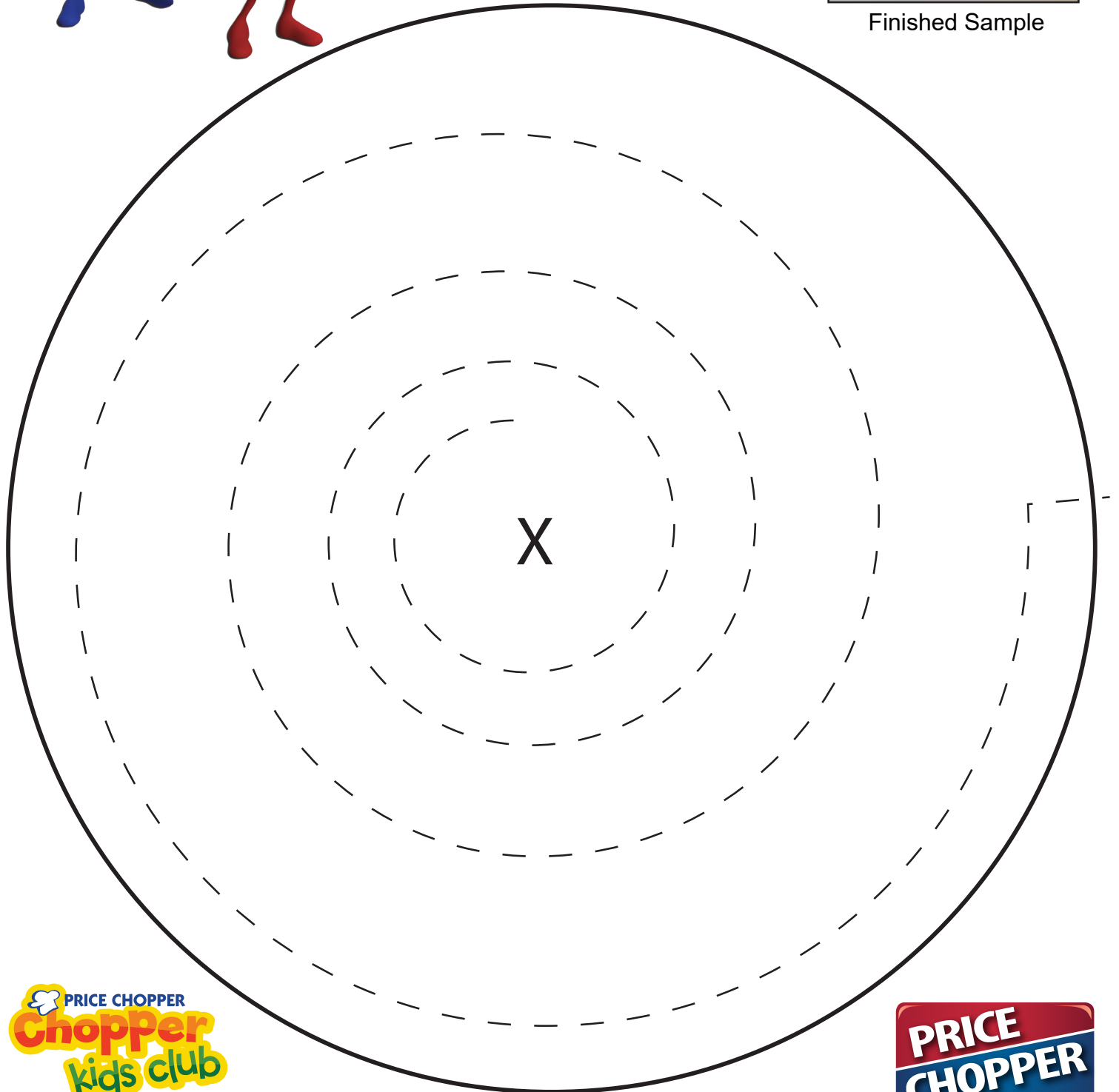


# Make Your Own SWIRLING SNOWMAN

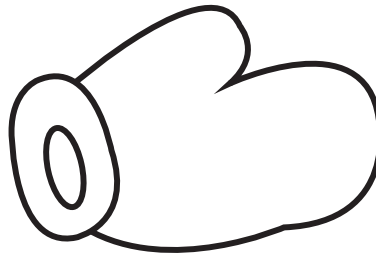
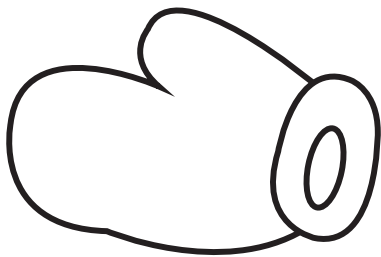
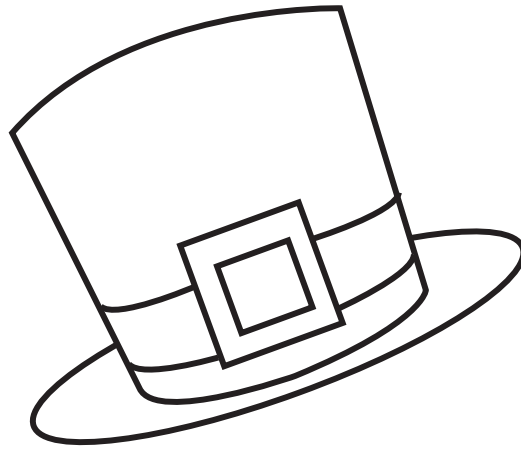
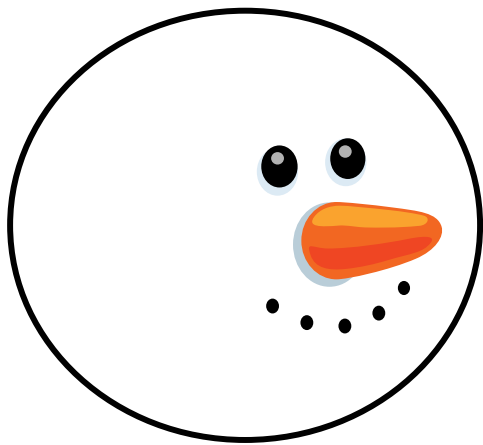


Finished Sample



Make Your Own

# SWIRLING SNOWMAN



**Supplies:**

Printer, Paper, Scissors,  
Tape or Glue, and  
Crayons or Markers

**Directions:**

Print both pages. Cut out the circle on the solid black line, then cut along the dotted line to create a swirl. Color the gloves, hat, mittens and boots, then cut each one out. Tape or glue these items to the swirl, placing the head over the X and the other parts wherever you want to create a silly, bouncy snowman to hang up for winter.